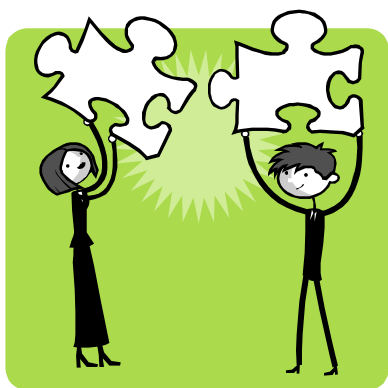


## What is a Parent Partner?

A Parent Partner is someone who has gone through the child welfare system and successfully reunified with his or her children. Parent Partners are sensitive to the concerns of birth parents, and are credible as someone knowledgeable about the system.



The Parent Partner Program is a support and resource service extended to parent(s) who experience an out-of-home placement of their child(ren). The program is completely voluntary and it is not part of the treatment plan. If you choose not to participate, no member of DHS will hold it against you.

## How can a Parent Partner Help me?

A Parent Partner can assist you by providing support, empathy, and information about the Foster Care system, courts, services, etc.

A Parent Partner will be available to accompany you to court proceedings, Permanency Planning Conference (PPC), other agency required meetings, etc. at your discretion for the purposes of support.

## How do the Parent Partner Services begin?

You can make a decision to receive Parent Partner services today, at your initial PPC or you may want to think about it for a day or so.

If you decide later that you are interested in the Parent Partner Services you can contact the Foster Care Specialist that is assigned to work with you, or you can contact the Contracting Agency listed on the back of this brochure. He/she will refer you to the Parent Partner services.

## What should I expect once I've decided to work with a Parent Partner?

A Parent Partner will contact you within 72 hours of receipt of the referral. They will set a day, time, and place to meet with you.

He/She will meet with you on a weekly basis, for the purpose of supporting you while you work through your Parent/Agency Agreement or Court Ordered Treatment Plan.

The Parent Partner will help you to identify issues and barriers that may be preventing you from reunifying with your child(ren).

The Parent Partner may also be able to help you to secure services that may be available to help you to reunify with your children.



If you would like to receive Parent Partner services, contact:

**TARGET AREA 2 Zip Codes:**

48201, 48208, 48209, 48210, 48216, 48217, 48219, 48223, 48226, 48228, 48235, and Detroit East

Kim Hunt or  
Vanessa Isom-Jackson:  
313-895-2860  
Assoc. for Children's Mental Health  
6900 McGraw  
Detroit, MI 48210

**TARGET AREA 3 Zip Codes:**

48202, 48203, 48204, 48206, 48221, 48227, and 48238.  
Detroit East and Native Americans throughout Wayne County

Denise Wellons-Glover or  
Vera Jones: 313-664-0700 ext. 250  
Child Care Coordinating Council  
8726 Woodward Ave  
Detroit, MI 48202

**TARGET AREA 4 Zip Codes:**

48101, 48120, 48122, 48124, 48126, 48128, 48134, 48138, 48146, 48164, 48173, 48180, 48183, 48192, 48193, 48195, 48218, 48229

Lacea Curtis: 734-785-7705 ext. 7291 or  
Rita Turner-Sheerin: 734-785-7705 ext. 7188  
The Guidance Center  
15601 Northline Rd.  
Southgate, MI 48195

**TARGET AREA 5 Zip Codes:**

48111, 48125, 48127, 48135, 48141, 48150, 48152, 48154, 48167, 48168, 48170, 48174, 48174, 48184, 48185, 48186, 48187, 48188, 48239, 48240

James Krizan:  
313-255-8264

Judson Center  
12723 Telegraph  
Redford, MI 48239

# PARENT PARTNER PROGRAM

*Has your child been placed into the Foster Care System?*

*You can be reunited with your child.*

*There is hope for you and your child....*

*We did it! So can you!  
It's not impossible,  
it's not too late!*



*Parent Partners can help.  
Give us a call!*