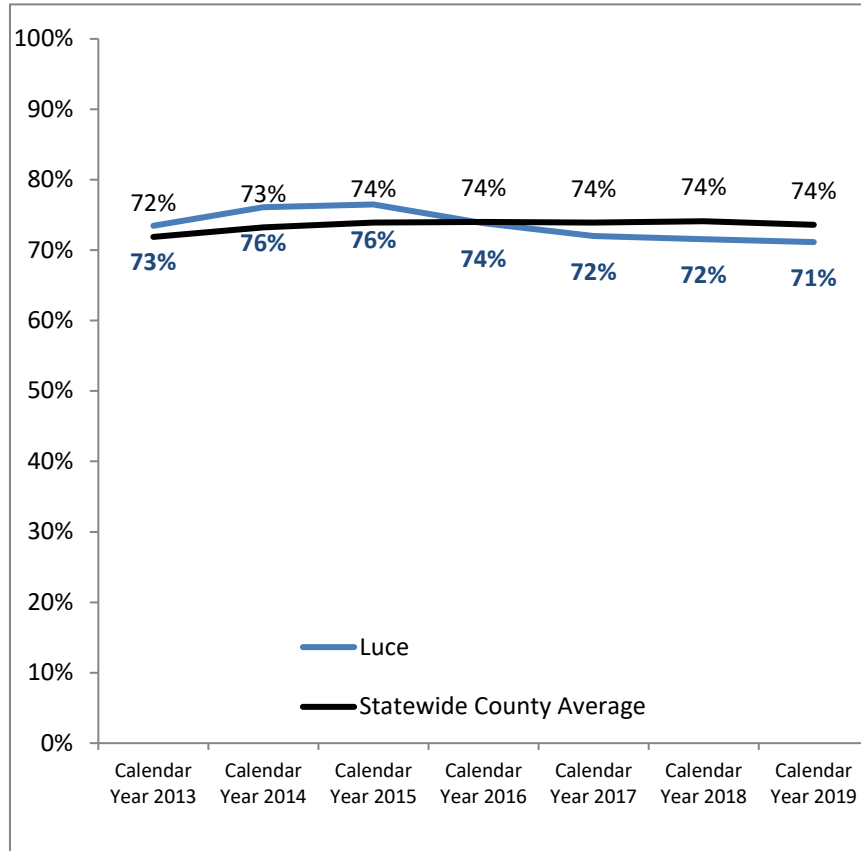
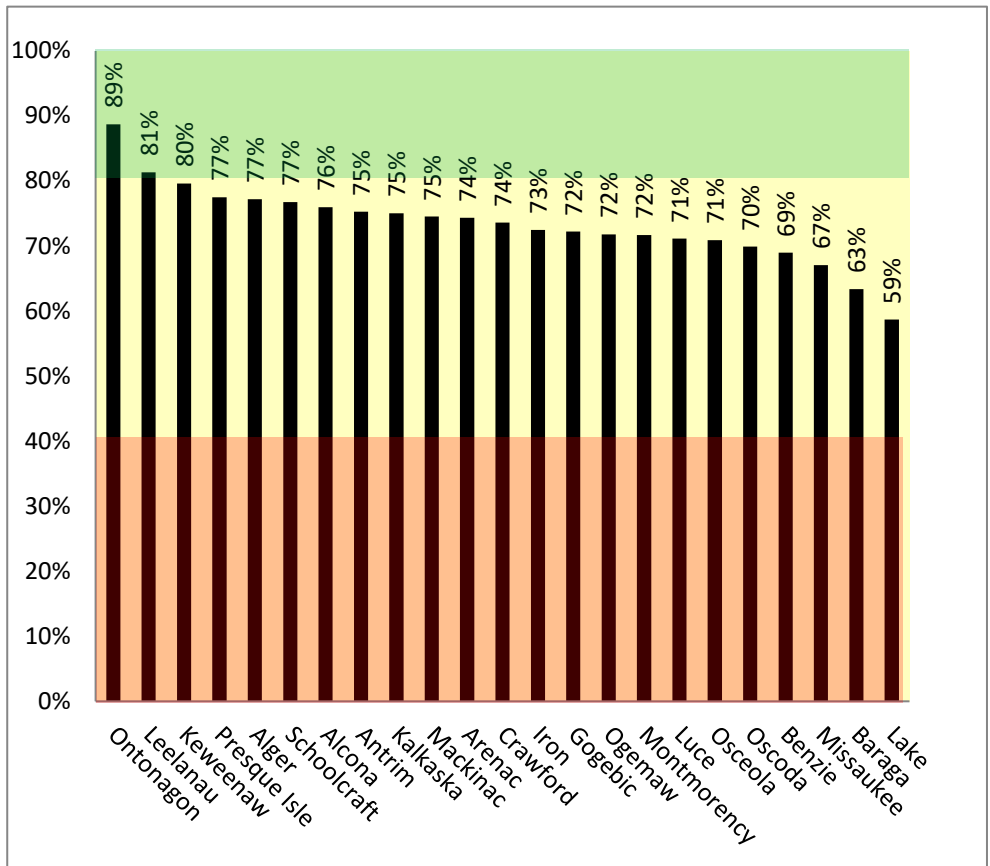


Percent of Current Support Paid in the Month Due

Trends in This County



2019 Rates in Comparison Group



Counties that collect and disburse 40% or more receive federal incentives. The incentive rate increases as the disbursement rate increases, up to 79%. Courts that disburse 80% or more have maximized the incentives earned.

These rates may be different from the rates on SCAO 41 because these rates include additional charges. Child support, child care, ordinary medical, educational, interstate, bonuses, and foster care ordinary medical, educational, interstate, bonuses, and foster care charges are included in these rates and on SCAO 41. Birth expenses, medical support, medicaid reimbursement, payee birthing expenses, and spousal support are included in these rates, but not on SCAO 41.