



DISTRICT COURT FELONY FILINGS, CLEARANCE RATES, AND CASE AGE RATES

Percent Disposed within 28 Days

Final Time Guideline

75%

Statewide Average

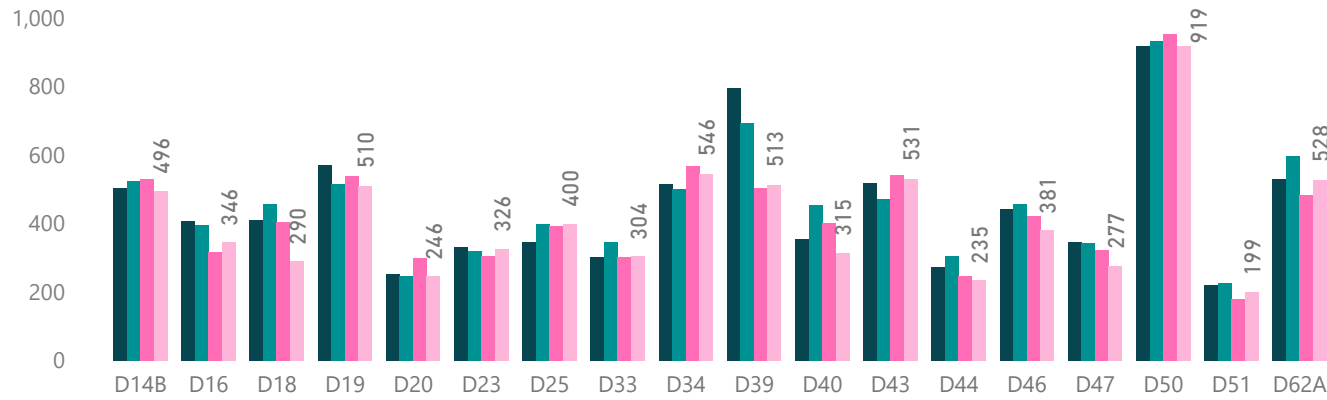
70%

Third Class Medium Court Average

67%

New Filing Trends

● 2016 ● 2017 ● 2018 ● 2019



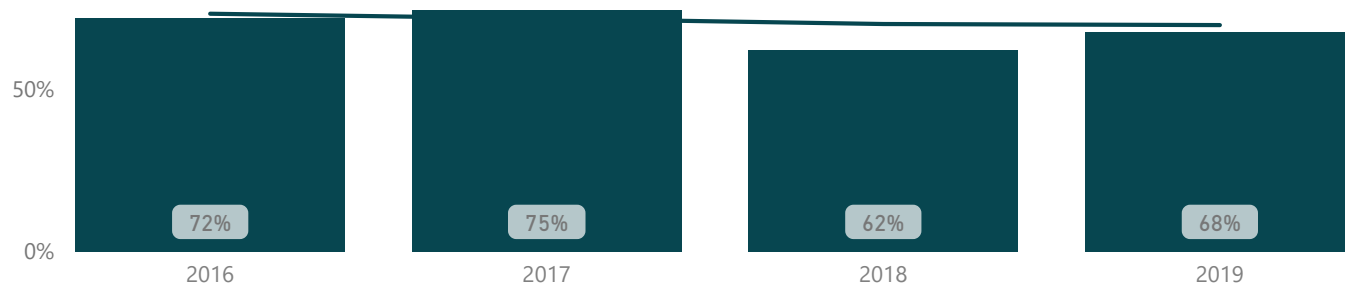
D14B - Township of Ypsilanti Clearance Rates

● 2016 ● 2017 ● 2018 ● 2019



D14B - Township of Ypsilanti Case Age Trends

● Final Case Age — Statewide Average



County Case Age Rates

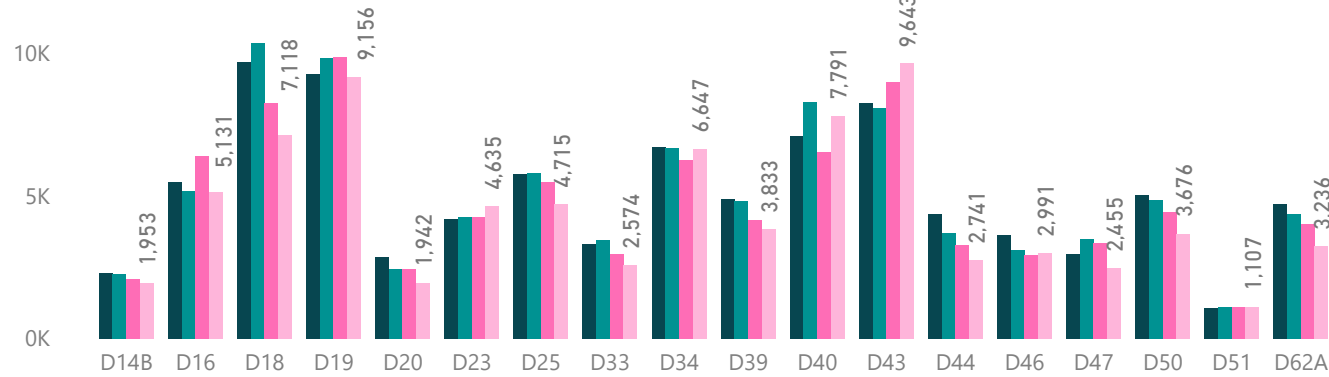
Court Code	Jurisdiction	Cases Pending Over 28 Days	Disposed within 28 Days
D14B	Township of Ypsilanti	14	68%
D16	City of Livonia	2	89%
D18	City of Westland	8	76%
D19	City of Dearborn	8	81%
D20	City of Dearborn Heights	2	63%
D23	City of Taylor	3	73%
D25	Cities of Ecorse, Lincoln Park, and River Rouge	8	75%
D33	City of Woodhaven, et al.	1	84%
D34	Cities of Romulus and Belleville, et al.	14	69%
D39	Cities of Roseville and Fraser	17	63%
D40	City of Saint Clair Shores	9	56%
D43	Cities of Ferndale, Hazel Park, and Madison Heights	5	87%
D44	City of Royal Oak and City of Berkley	16	49%
D46	Cities of Southfield and Lathrup Village, et al.	15	52%
D47	Cities of Farmington and Farmington Hills	10	60%
D50	City of Pontiac	32	57%
D51	Township of Waterford	8	58%
D62A	City of Wyoming	2	90%



DISTRICT COURT MISDEMEANOR FILINGS, CLEARANCE RATES, AND CASE AGE RATES

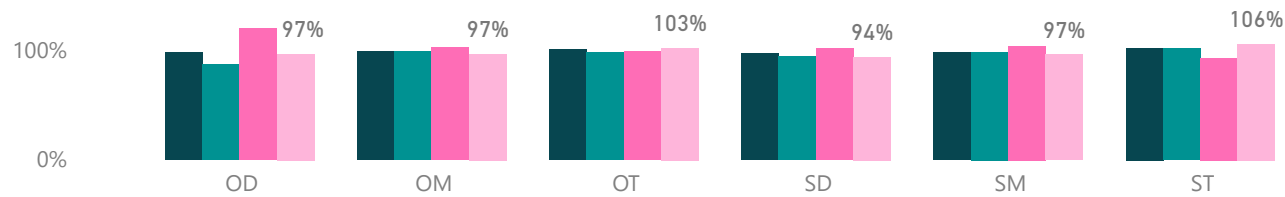
New Filing Trends

● 2016 ● 2017 ● 2018 ● 2019



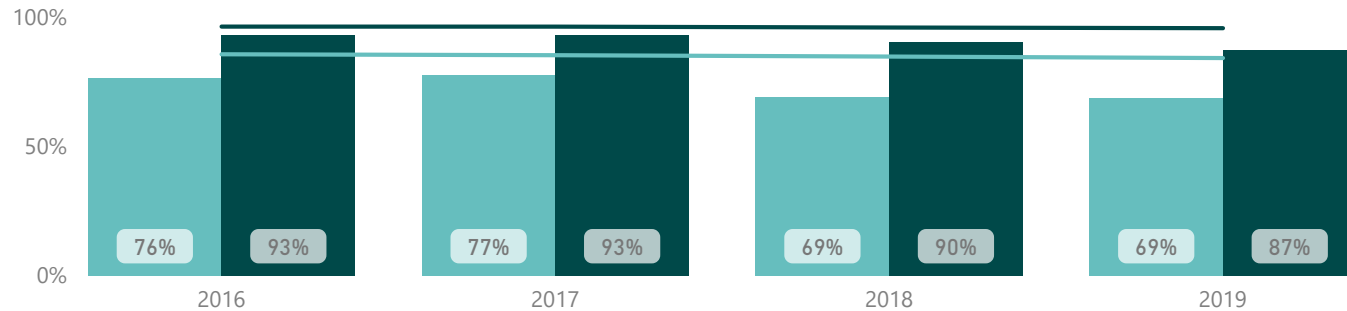
D14B - Township of Ypsilanti Clearance Rates

● 2016 ● 2017 ● 2018 ● 2019

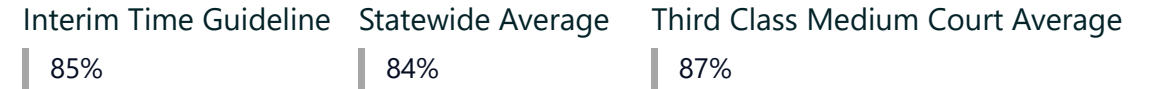


D14B - Township of Ypsilanti Case Age Trends

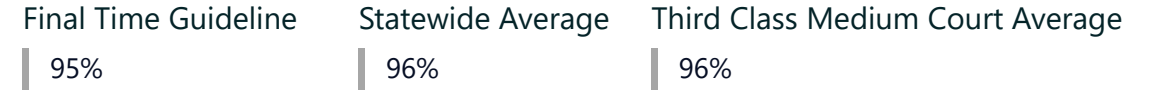
● Interim Case Age ● Final Case Age — Statewide Average Interim — Statewide Average Final



Percent Disposed within 63 Days



Percent Disposed within 126 Days



County Case Age Rates

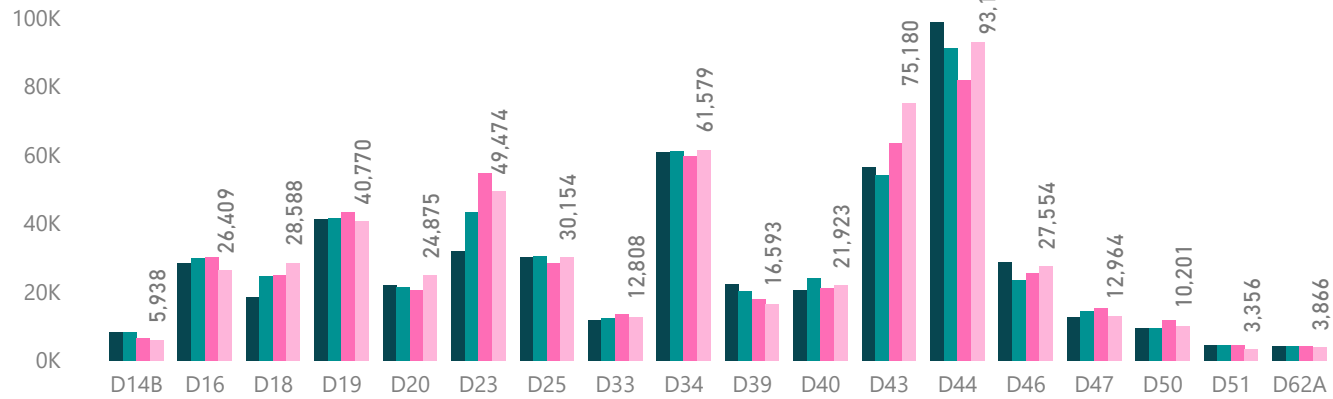
Court Code	Jurisdiction	Cases Pending Over 126 Days	Disposed within 63 Days	Disposed within 126 Days
D14B	Township of Ypsilanti	57	69%	87%
D16	City of Livonia	3	93%	99%
D18	City of Westland	8	94%	99%
D19	City of Dearborn	32	86%	97%
D20	City of Dearborn Heights	7	93%	96%
D23	City of Taylor	65	85%	95%
D25	Cities of Ecorse, Lincoln Park, and River Rouge	103	81%	92%
D33	City of Woodhaven, et al.	2	91%	100%
D34	Cities of Romulus and Belleville, et al.	21	92%	98%
D39	Cities of Roseville and Fraser	20	89%	97%
D40	City of Saint Clair Shores	102	84%	93%
D43	Cities of Ferndale, Hazel Park, and Madison Heights	3	98%	100%
D44	City of Royal Oak and City of Berkley	43	68%	90%
D46	Cities of Southfield and Lathrup Village, et al.	14	89%	97%
D47	Cities of Farmington and Farmington Hills	5	87%	98%
D50	City of Pontiac	11	93%	98%
D51	Township of Waterford	5	93%	98%
D62A	City of Wyoming	21	89%	99%



DISTRICT COURT CIVIL INFRACTION FILINGS, CLEARANCE RATES, AND CASE AGE RATES

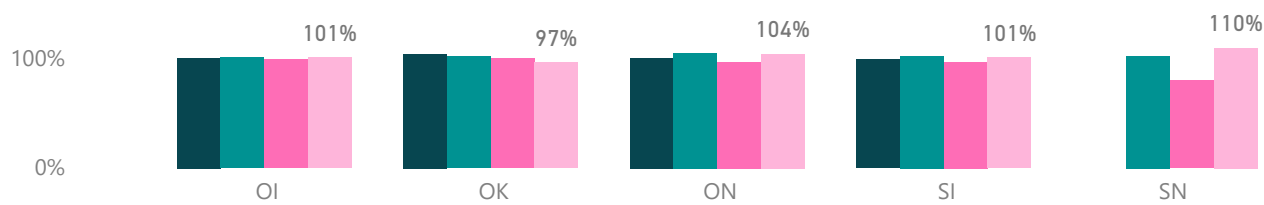
New Filing Trends

● 2016 ● 2017 ● 2018 ● 2019



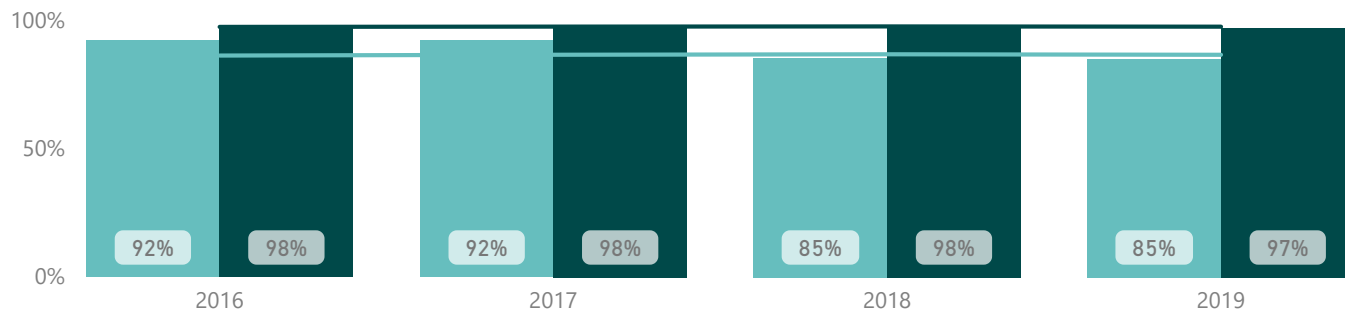
D14B - Township of Ypsilanti Clearance Rates

● 2016 ● 2017 ● 2018 ● 2019

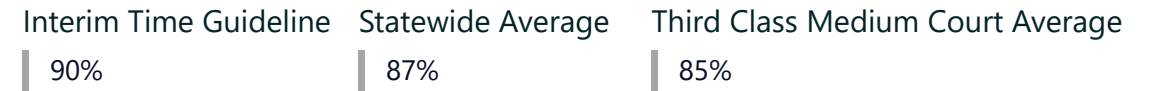


D14B - Township of Ypsilanti Case Age Trends

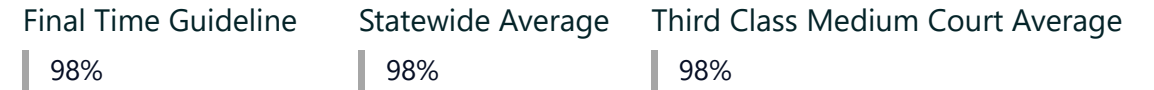
● Interim Case Age ● Final Case Age — Statewide Average Interim — Statewide Average Final



Percent Disposed within 35 Days



Percent Disposed within 84 Days



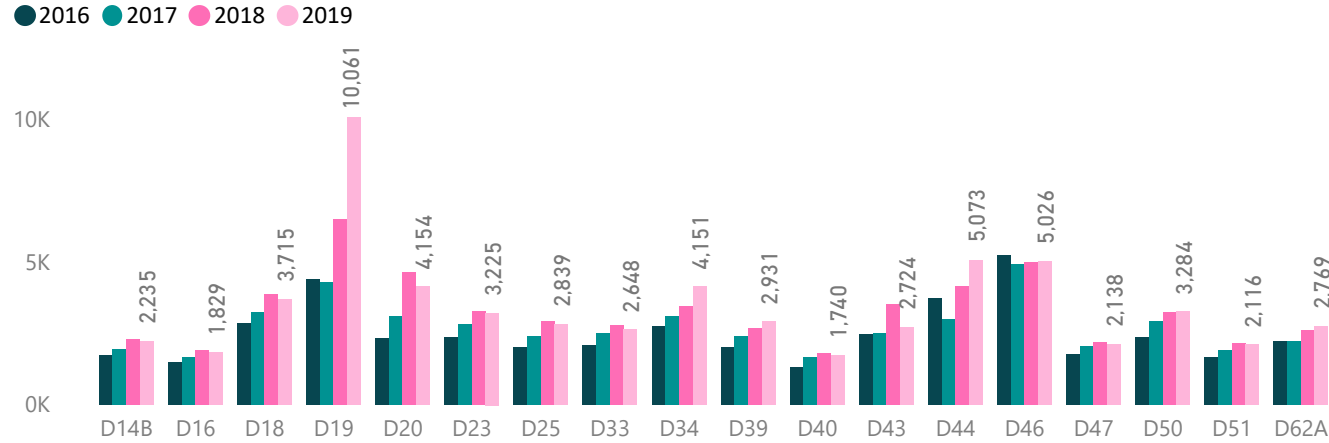
County Case Age Rates

Court Code	Jurisdiction	Cases Pending Over 84 Days	Disposed within 35 Days	Disposed within 84 Days
D14B	Township of Ypsilanti	56	85%	97%
D16	City of Livonia	18	92%	99%
D18	City of Westland	7	94%	99%
D19	City of Dearborn	91	84%	98%
D20	City of Dearborn Heights	120	88%	98%
D23	City of Taylor	234	85%	98%
D25	Cities of Ecorse, Lincoln Park, and River Rouge	123	90%	98%
D33	City of Woodhaven, et al.	4	79%	99%
D34	Cities of Romulus and Belleville, et al.	56	84%	98%
D39	Cities of Roseville and Fraser	75	63%	96%
D40	City of Saint Clair Shores	556	73%	94%
D43	Cities of Ferndale, Hazel Park, and Madison Heights	92	88%	98%
D44	City of Royal Oak and City of Berkley	79	94%	99%
D46	Cities of Southfield and Lathrup Village, et al.	7	94%	100%
D47	Cities of Farmington and Farmington Hills	26	70%	97%
D50	City of Pontiac	420	86%	95%
D51	Township of Waterford	3	87%	98%
D62A	City of Wyoming	1	95%	100%

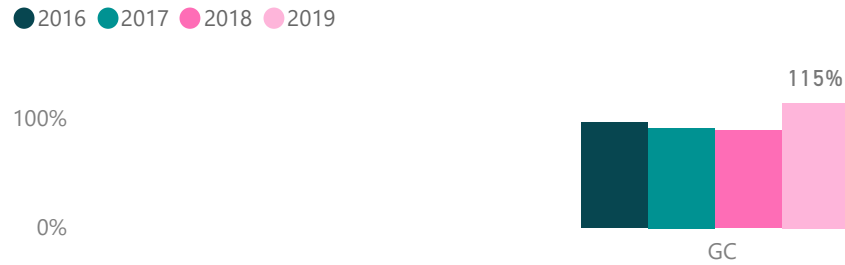


DISTRICT COURT GENERAL CIVIL FILINGS, CLEARANCE RATES, AND CASE AGE RATES

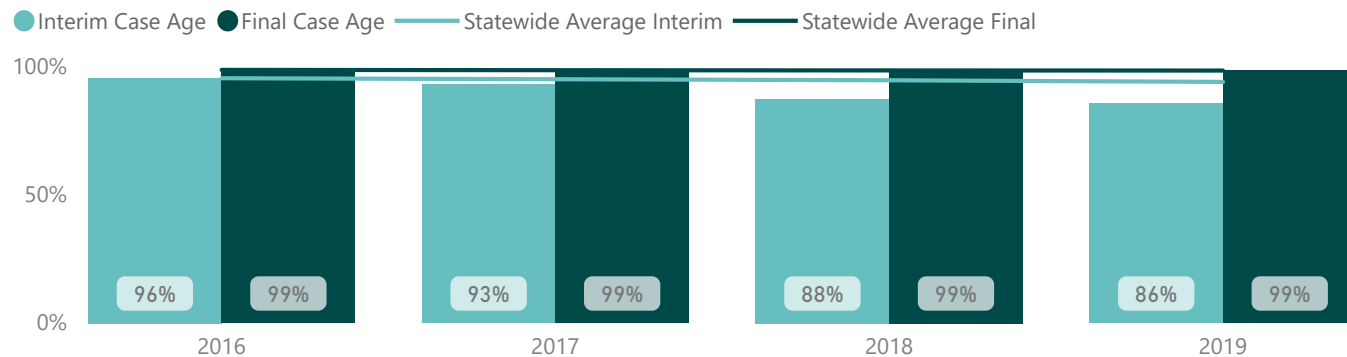
New Filing Trends



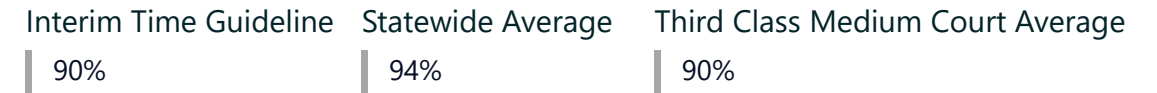
D14B - Township of Ypsilanti Clearance Rates



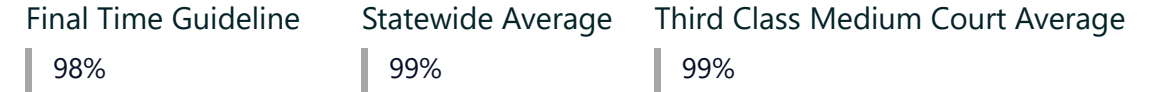
D14B - Township of Ypsilanti Case Age Trends



Percent Disposed within 273 Days



Percent Disposed within 455 Days



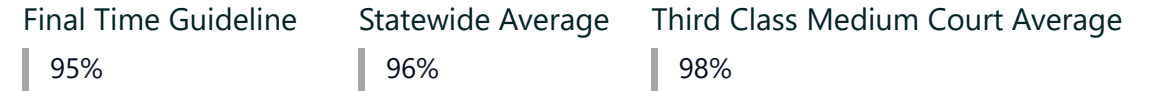
County Case Age Rates

Court Code	Jurisdiction	Cases Pending Over 455 Days	Disposed within 273 Days	Disposed within 455 Days
D14B	Township of Ypsilanti	7	86%	99%
D16	City of Livonia	0	99%	100%
D18	City of Westland	5	99%	100%
D19	City of Dearborn	21	78%	98%
D20	City of Dearborn Heights	20	78%	98%
D23	City of Taylor	5	86%	99%
D25	Cities of Ecorse, Lincoln Park, and River Rouge	9	91%	99%
D33	City of Woodhaven, et al.	0	99%	100%
D34	Cities of Romulus and Belleville, et al.	8	89%	99%
D39	Cities of Roseville and Fraser	0	97%	100%
D40	City of Saint Clair Shores	4	97%	99%
D43	Cities of Ferndale, Hazel Park, and Madison Heights	3	83%	100%
D44	City of Royal Oak and City of Berkley	75	57%	95%
D46	Cities of Southfield and Lathrup Village, et al.	1	97%	100%
D47	Cities of Farmington and Farmington Hills	5	96%	100%
D50	City of Pontiac	22	90%	98%
D51	Township of Waterford	1	98%	100%
D62A	City of Wyoming	0	98%	100%

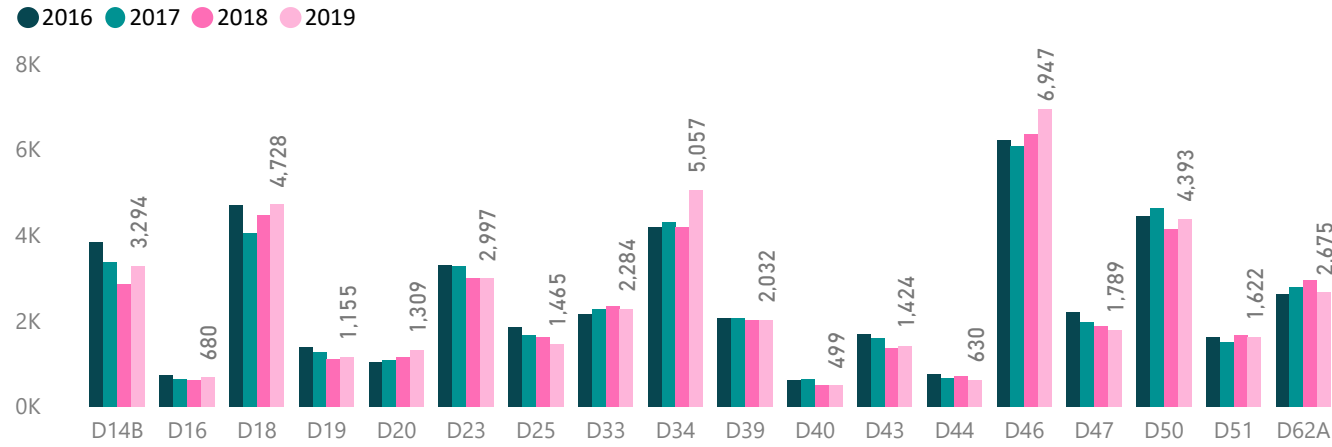


DISTRICT COURT SUMMARY CIVIL FILINGS, CLEARANCE RATES, AND CASE AGE RATES

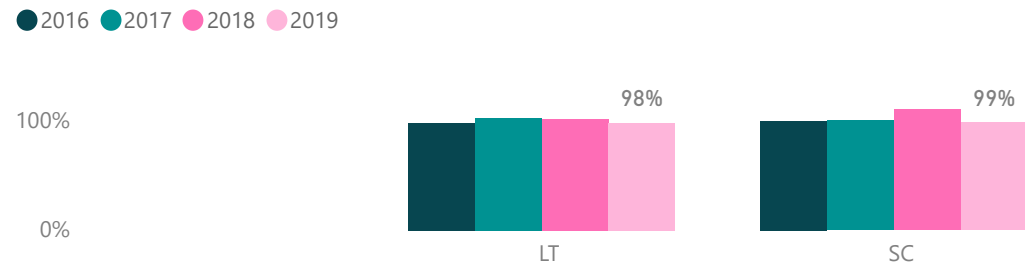
Percent Disposed within 126 Days



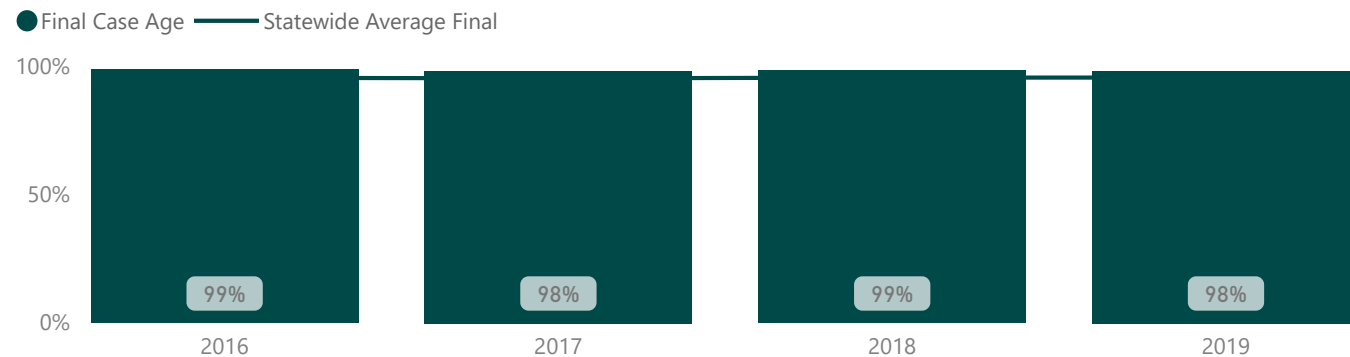
New Filing Trends



D14B - Township of Ypsilanti Clearance Rates



D14B - Township of Ypsilanti Case Age Trends



County Case Age Rates

Court Code	Jurisdiction	Cases Pending Over 126 Days	Disposed within 126 Days
D14B	Township of Ypsilanti	36	98%
D16	City of Livonia	0	100%
D18	City of Westland	2	99%
D19	City of Dearborn	3	98%
D20	City of Dearborn Heights	5	98%
D23	City of Taylor	17	98%
D25	Cities of Ecorse, Lincoln Park, and River Rouge	25	95%
D33	City of Woodhaven, et al.	1	100%
D34	Cities of Romulus and Belleville, et al.	21	98%
D39	Cities of Roseville and Fraser	2	98%
D40	City of Saint Clair Shores	4	93%
D43	Cities of Ferndale, Hazel Park, and Madison Heights	20	96%
D44	City of Royal Oak and City of Berkley	12	96%
D46	Cities of Southfield and Lathrup Village, et al.	11	97%
D47	Cities of Farmington and Farmington Hills	20	97%
D50	City of Pontiac	8	99%
D51	Township of Waterford	0	98%
D62A	City of Wyoming	1	100%