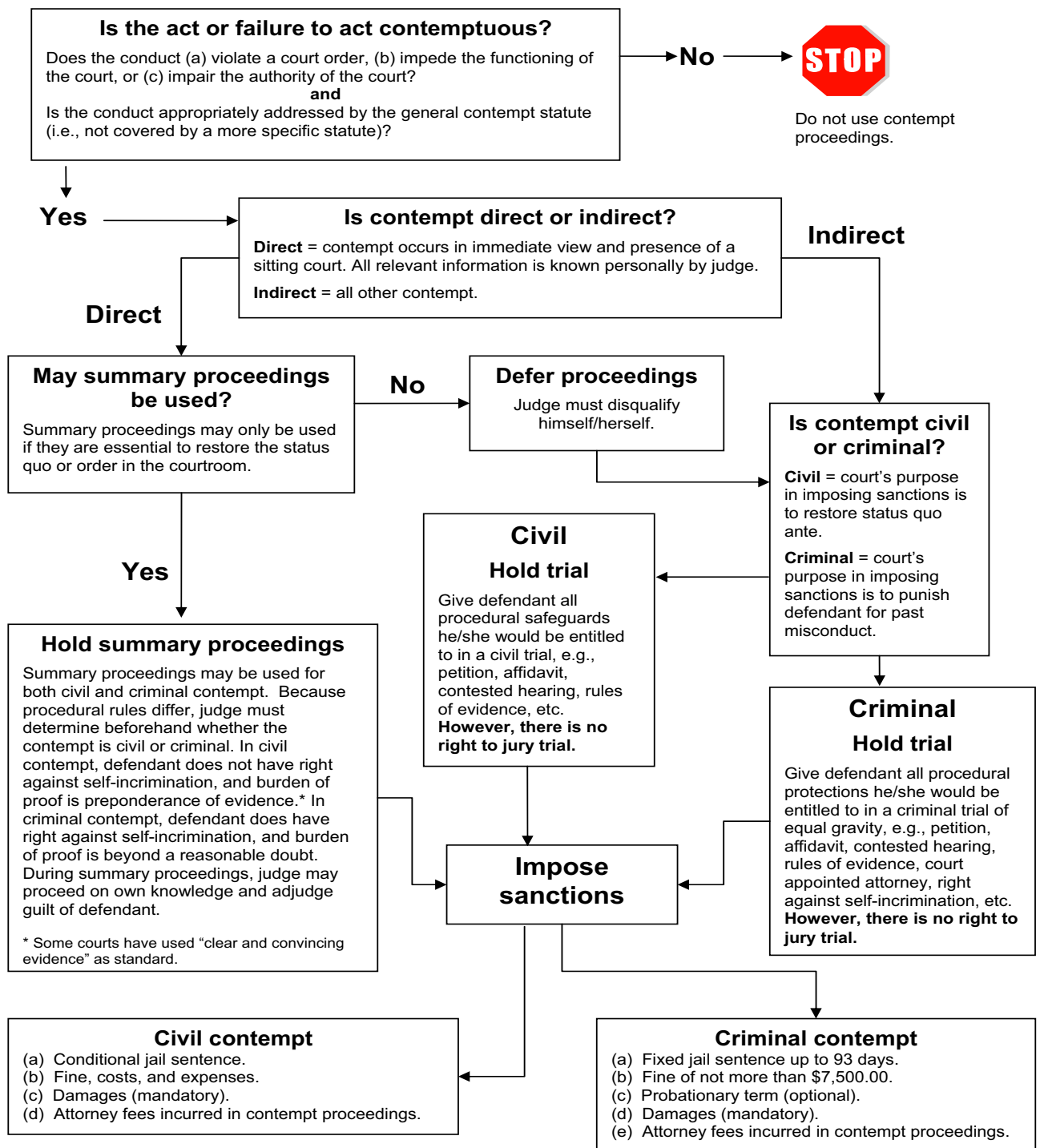


Contempt of Court Flowchart¹



*This chart applies to contempt proceedings initiated under the general contempt statute—MCL 600.1715. Contempt proceedings involving conduct addressed under specific statutes (MCL 600.2950 and 600.2950a, for example) are subject to the provisions of those specific statutes. See Chapter 5 for examples of contumacious conduct governed by statutes other than MCL 600.1715.

¹ See the Michigan Judicial Institute’s *Contempt of Court Benchbook* for more information on contempt proceedings.

